



CMO VALVES
manufacturing the valve you need

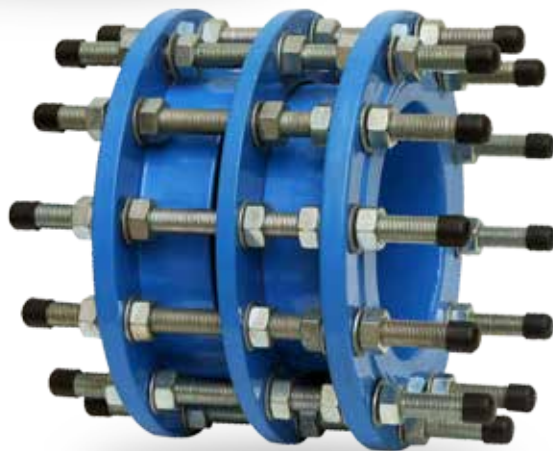
44A SERIES



FABRICATION RANGE *STEEL DISMANTLING JOINTS*

UTILIZATION:

- Dismantling joints, used with the valves to easily dismantle, without the need to substitute the tube.
- It has minimum head loss, total bore and 100% water tight.



SERIES - 44

DISMANTLING JOINTS



DIMENSIONS

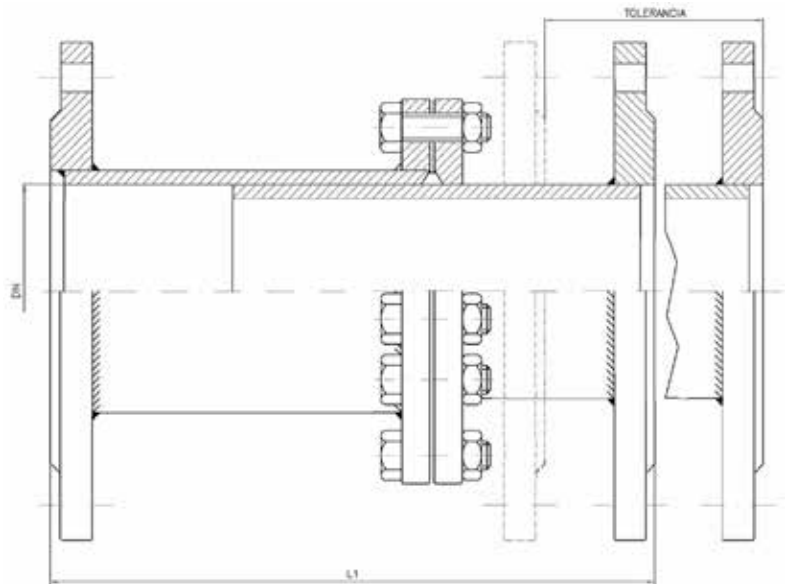
DN	L1	Toler.	Weight	
			PN10	PN16
50	180	±30	10,0	10,0
65			12,0	12,0
80			14,0	14,0
100			18,0	18,0
125			20,0	20,0
150	200	±40	24,0	24,0
200			30,0	31,0
250			40,0	42,0
300			46,0	53,0
350			62,0	78,0
400	240	±40	80,0	82,0
450			88,0	95,0
500			110,0	136,0
600			140,0	166,0
700			188,0	210,0
800	300	±50	276,0	308,0
900			316,0	350,0
1000			375,0	412,0
1100			450,0	515,0
1200			535,0	610,0
1300			635,0	675,0
1400			700,0	767,0
1500			785,0	852,0
1600			895,0	955,0
1700			950,0	1100,0
1800	1075,0	1132,0		
2000	1285,0	1373,0		

GENERAL FEATURES:

- Minimum head loss.
- O-rings for 100% water tightness.
- Intermediate flanges are machined to assure the perfect housing of the tightness O-ring.
- Allow big longitudinal movement.
- Max. working pressure according to design pressure PN10/16.
- Working temperature between 0°C and 90°C.

STANDARDS APPLIED:

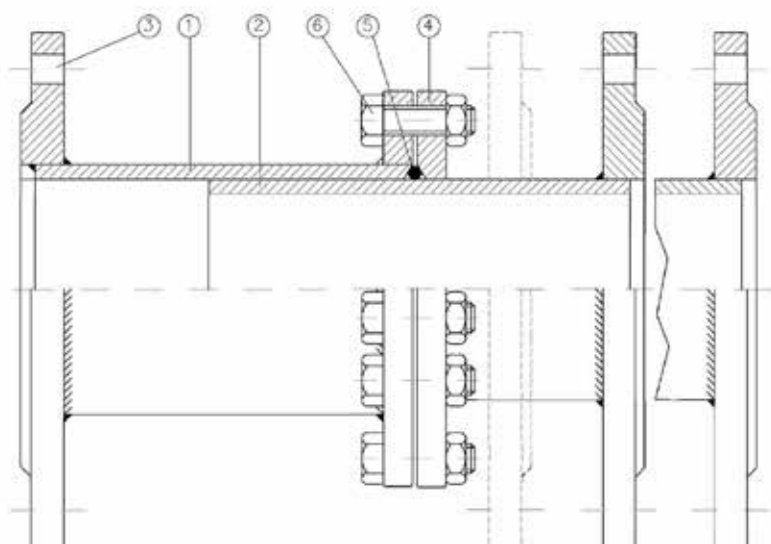
- Hydrostatic tests according to EN 12266-1, class A.
- EC directive.
- Side flanges according to ISO 7005-1.



The images and drawings are non contractual.
The specifications of the shown products could vary without previous notice.

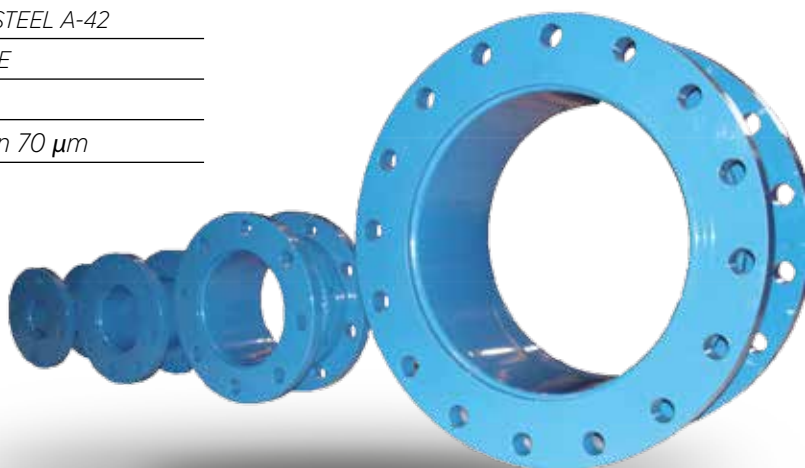
SERIES - 44

DISMANTLING JOINTS



DESCRIPCION

1	EXTERNAL FLANGE	AISI 304
2	INTERNAL FLANGE	AISI 304
3	FLANGES	CARBON STEEL A-42
4	TIGHTENING FLANGE	CARBON STEEL A-42
5	O-RING	NEOPRENE
6	BOLTS	STEEL 5.6
	PAINTING RAL 5015	Epoxy min 70 μm



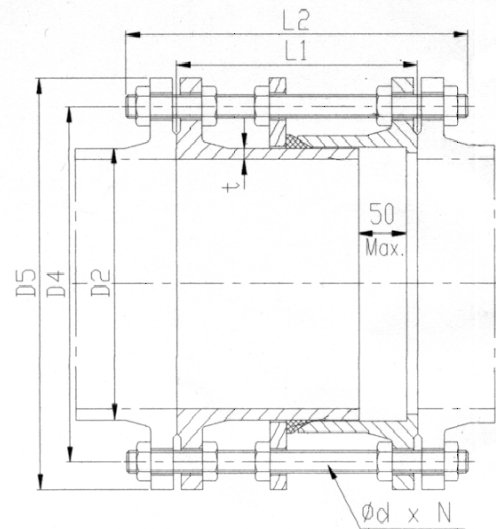
SERIES - 44

DISMANTLING JOINTS



DIMENSIONS PN10

DN	D2	D4	D5	L1	L2	d	N	T	Weight
50	66	125	165	180	320	19	4	6.0	9,9
65	82	145	185	180	320	19	4	6.0	12,0
80	98	160	200	200	340	19	8	7.0	12,8
100	118	180	220	200	340	19	8	7.5	14,1
125	144	210	250	200	340	19	8	7.5	17,7
150	170	240	285	200	340	23	8	8.0	23,9
200	222	295	340	220	350	23	8	8.5	34,9
250	274	350	400	230	370	23	12	9.0	47,1
300	326	400	455	230	390	23	12	10.0	59,3
350	378	460	505	250	400	23	16	10.5	78,2
400	429	515	565	250	420	28	16	11.0	92,6
450	480	565	615	270	435	28	16	11.5	105,0
500	532	620	670	280	440	28	20	12.0	122,5
600	635	725	780	300	460	31	20	13.5	173,9
700	738	840	895	300	480	31	24	14.5	222,3
800	842	950	1015	320	500	34	24	16.0	279,6
900	945	1050	1115	320	500	34	28	17.0	345,2
1000	1048	1160	1230	340	545	37	28	18.0	426,2
1100	1152	1270	1340	350	545	37	32	19.5	566,2
1200	1255	1380	1455	370	580	40	32	20.5	608,2



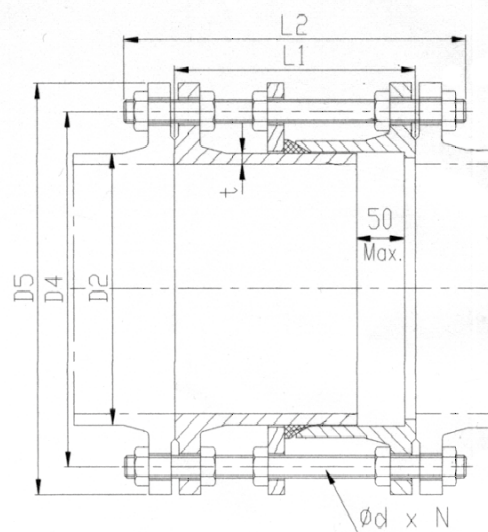
SERIES - 44

DISMANTLING JOINTS



DIMENSIONS PN16

DN	D2	D4	D5	L1	L2	d	N	T	Weight
50	66	125	165	180	320	19	4	6.0	9,9
65	82	145	185	180	320	19	4	6.0	12,0
80	98	160	200	200	340	19	8	7.0	12,8
100	118	180	220	200	340	19	8	7.5	14,1
125	144	210	250	200	340	19	8	7.5	17,7
150	170	240	285	200	340	23	8	8.0	23,9
200	222	295	340	220	350	23	12	8.5	26,0
250	274	355	400	230	380	28	12	9.0	37,5
300	326	410	455	230	410	28	12	10.0	51,8
350	378	470	520	260	410	28	16	10.5	63,8
400	429	525	580	250	450	31	16	11.0	84,2
450	480	585	640	270	450	31	20	11.5	112,3
500	532	650	715	280	500	34	20	12.0	182,6
600	635	770	840	300	500	37	20	13.5	260,3
700	738	840	910	300	500	37	24	14.5	248,7
800	842	950	1025	320	530	40	24	16.0	367,0
900	945	1050	1125	320	530	40	28	17.0	421,1
1000	1048	1170	1255	340	560	43	28	18.0	565,1
1100	1152	1270	1355	350	570	43	32	19.5	647,0
1200	1255	1390	1485	360	620	49	32	20.5	765,3



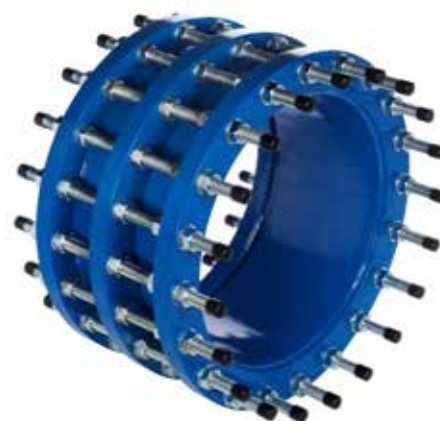
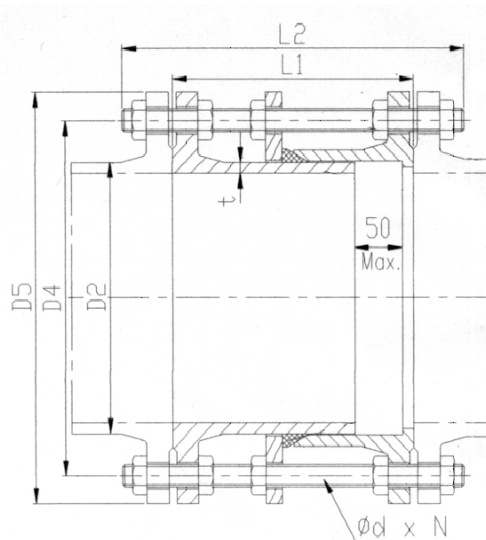
SERIES - 44

DISMANTLING JOINTS



DIMENSIONS PN25

DN	D2	D4	D5	L1	L2	d	N	T	Weight
50	66	125	165	180	320	19	4	6.0	14,9
65	82	145	185	180	320	19	4	6.0	18,0
80	98	160	200	200	340	19	8	7.0	19,3
100	118	190	235	200	340	23	8	7.5	20,8
125	144	220	270	200	340	28	8	7.5	26,5
150	170	250	300	201	341	28	8	8.0	32,6
200	222	310	360	222	352	28	12	8.5	53,4
250	274	370	425	232.5	383	31	12	9.0	78,5
300	326	430	485	233	413	31	16	10.0	89,7
350	378	490	555	253.5	414	34	16	10.5	95,7
400	429	550	620	254	454	37	16	11.0	144,8
450	480	600	670	274.5	455	37	20	11.5	168,5
500	532	660	730	285	505	37	20	12.0	210,1
600	635	770	845	306	506	40	20	13.5	390,4
700	738	875	960	307	507	43	24	14.5	373,1
800	842	990	1085	328	538	49	24	16.0	548,3
900	945	1090	1185	329	539	49	28	17.0	631,6
1000	1048	1210	1320	350	570	56	28	18.0	945,0
1100	1152	1310	1420	361	581	56	32	19.5	1112,2
1200	1255	1420	1530	372	632	56	32	20.5	1192,8



SERIES - 44

DISMANTLING JOINTS

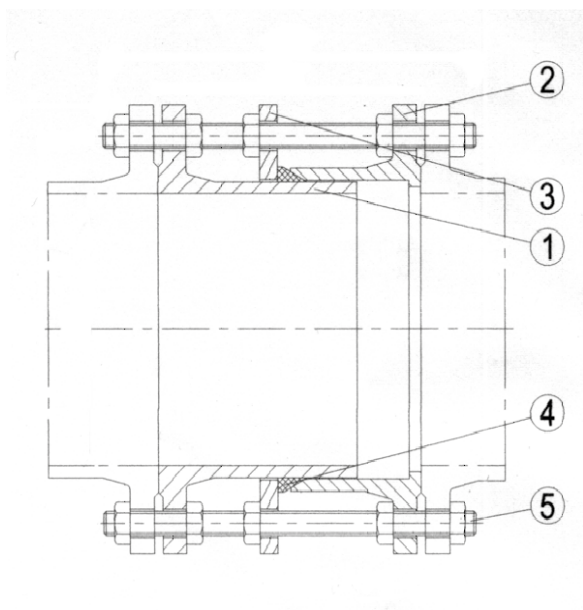


GENERAL FEATURES:

- Minimum head loss.
- O-rings for 100% water tightness.
- Allow big longitudinal movement.
- Max. working pressure according to design pressure PN10/16.
- Working temperature between 0°C and 90°C.

STANDARDS APPLIED:

- Hydrostatic tests according to EN 12266-1, class A.
- EC directive.
- Side flanges according to ISO 7005-1.



DESCRIPCION

1	PIPE	GJS500
2	BODY	GJS500
3	TIGHTENING FLANGE	GJS500
4	O-RING	EPDM
5	TIE RODS	GALVANIZED STEEL
	PAINTING RAL 5015	Epoxy 250 μm